



142 Leicester Road

, Salford, M7 4GA

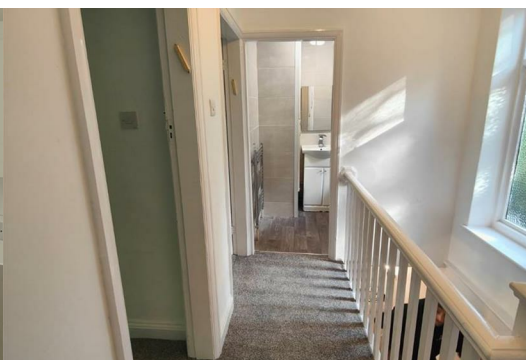
£1,495



Nestled on Leicester Road in Salford, this charming house offers a delightful blend of modern living and spacious comfort. With a generous area of 1,066 square feet, the property boasts two inviting reception rooms, perfect for both relaxation and entertaining guests. The three well-proportioned bedrooms provide ample space for family or guests, ensuring everyone has their own retreat.

Recently refurbished, this home features a brand-new kitchen and bathroom, designed with contemporary finishes that cater to today's lifestyle. The new flooring throughout adds a fresh and stylish touch, enhancing the overall appeal of the property.

One of the standout features of this home is the very generous front and back gardens, offering a wonderful outdoor space for gardening, play, or simply enjoying the fresh air. Whether you are hosting summer barbecues or enjoying a quiet evening under the stars, these gardens provide a perfect backdrop.



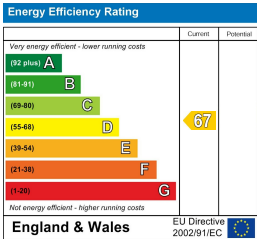
Area Map



Floor Plans



Energy Efficiency Graph



These particulars, whilst believed to be accurate are set out as a general outline only for guidance and do not constitute any part of an offer or contract. Intending purchasers should not rely on them as statements of representation of fact, but must satisfy themselves by inspection or otherwise as to their accuracy. No person in this firms employment has the authority to make or give any representation or warranty in respect of the property.